



## SAFE CONNECTION IS ALL THAT MATTERS

The only thing standing between safe hauling and a possibly disastrous accident is the secure coupling between the semi-trailer kingpin and the fifth wheel of the prime mover. Kingpin is a critical component in the coupling between the semi-trailer and the tractor unit.

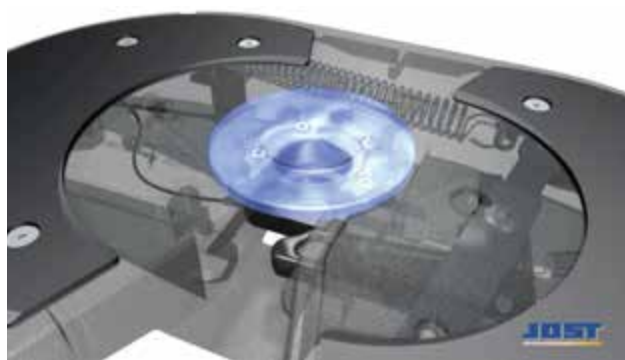
JOST has been producing kingpins since 1956. JOST kingpins meet the most stringent safety requirements, and the different designs allow JOST kingpins to be easily installed onto any trailer. They are produced with high quality, forged blanks which are tested for the complete absence of cracks. Replacing or converting JOST kingpins is quick and easy..



### EASILY REPLACEABLE AND CONVERTIBLE KINGPINS CAN SAVE SIGNIFICANT COSTS

JOST bolted kingpins are designed to be exchanged quickly and easily, which boosts operating hours.

When replacing a kingpin, ensure that only trained and authorized personnel familiar with the JOST installation manual and local regulations are assigned to the task.



### JOST KINGPINS INCREASE SAFETY DURING TRANSPORTATION

Rockinger founded in 1875 has defined all scientific background behind the connection of truck and trailer (D-value). JOST has build its product range on this expertise, which meets all modern specifications and safety standards for fifth wheels and trailers. JOST knows how to guarantee safety and reliability through robust development and production processes.

Since 1956 each JOST kingpin is 100% tested for material consistency (Ultrasonic and Magnet Flux), hardness (Brinell Hardness), and dimensions to meet the highest safety standards. Each batch of materials is analyzed for its chemical composition, and we control the forging process and all associated heat treatments. This expertise ensures the product quality that truck owners rely on.

When it comes to safety, JOST is the only brand you can trust!

### JOST KINGPINS REDUCE COSTS

Everything starts with the right design to meet local and global standards. Only the right mix of materials and production processes can ensure the surface hardness that guarantees our products have a long lifespan. Our kingpins maintain the precise elasticity needed to function for over 8 years (up to 300 000 km) with regular maintenance.

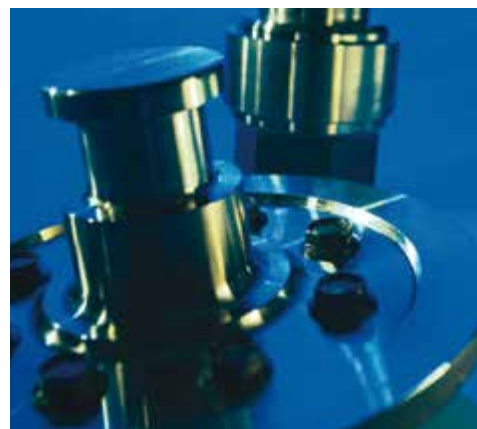
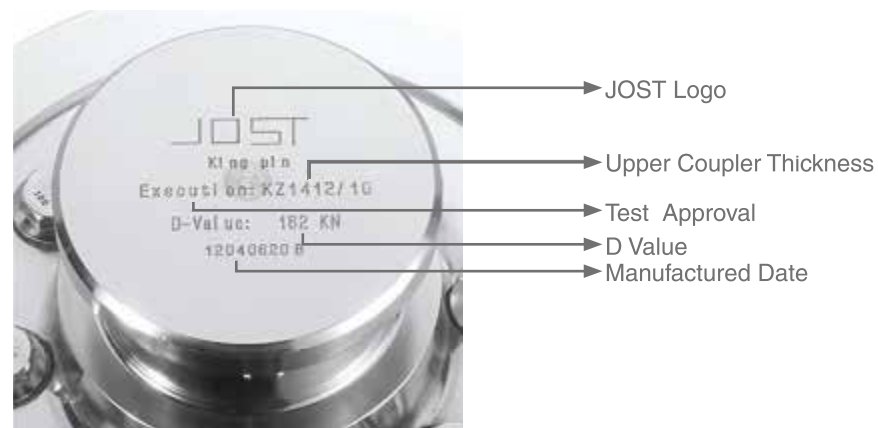
Optimal materials, production, and servicing gives JOST kingpins a longer life. With careful use, JOST kingpins last twice as long as non-hardened kingpins.

Over 65 years' consistent performance in this market has led to a wide availability of spare parts.

All of these factors combine to reduce overall costs.

Optimized Materials  
Highly Controlled Production  
Strict Process Control  
Material Control  
100% Testing

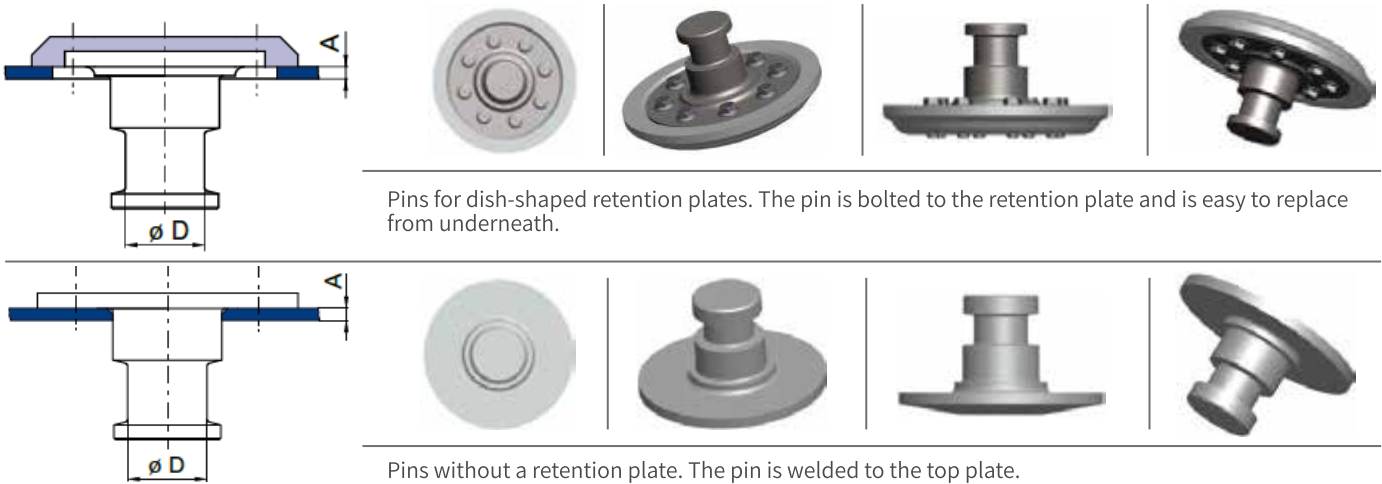
Results in :  
• Increased Safety  
• Higher Durability  
• Lower Costs



**D-Value**  $g=9.8m/s^2$  · U=Permissible fifth wheel load (t), T=Permissible total weight of the towing vehicle, including U (t),  
R=Permissible total trailer weight (t)

$$D=g \times \frac{0.6 \times T \times R}{T+R-U} [KN]$$

## JOST KINGPINS DESIGN



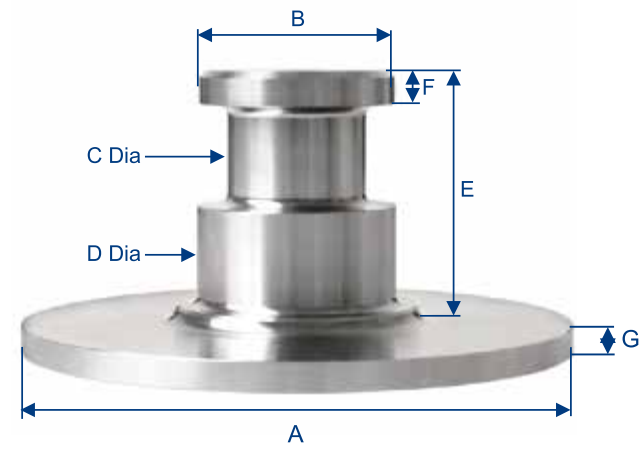
## JOST Kingpin

We carry the weight of the world around the globe by providing systems for commercial vehicles:  
Interfaces and support systems  
Tipping solutions  
Suspensions, axles and steering systems



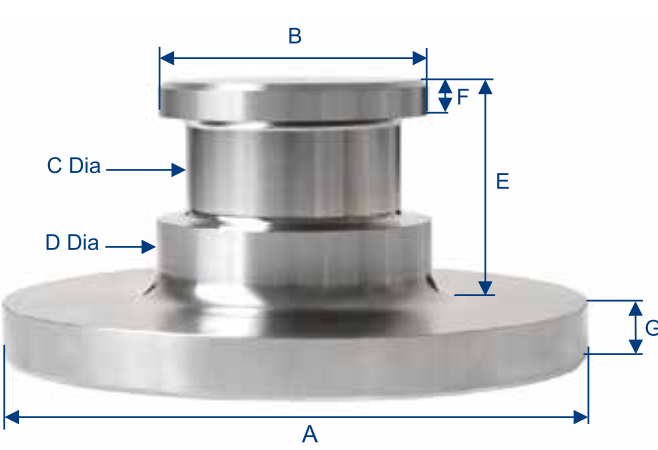


2.0" KW Kingpin

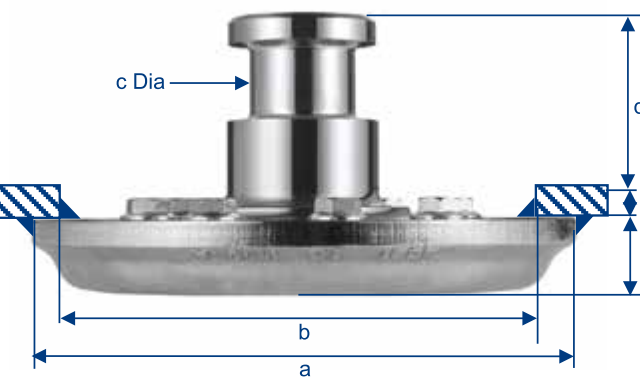


Model	D Value (KN)	Weight (kg)	A (mm)	B (mm)	C Dia (mm)	D Dia (mm)	E (mm)	F (mm)
KW 1006	108	5.5	203	71.5	2.0"	73	90.2	14.3
KW 1008	108	6.8	200	71.5	2.0"	73	91	12.5
KW 1010	108	6.8	200	71.5	2.0"	73	93	12.5
KW 1012	108	6.8	200	71.5	2.0"	73	95	12.5
KW 1810	210	12	240	111	3.5"	114	83	13.4
KW 1812	210	12	240	111	3.5"	114	85	13.4
KW 1814	210	12	240	111	3.5"	114	87	13.4
KW 1816	210	12	240	111	3.5"	114	89	13.4

3.5" KW Kingpin

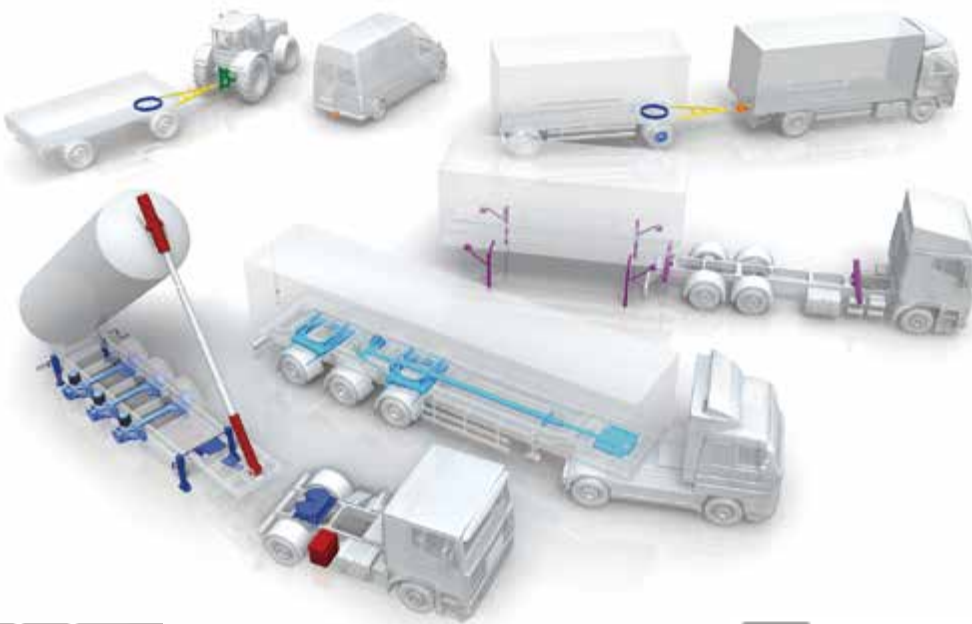
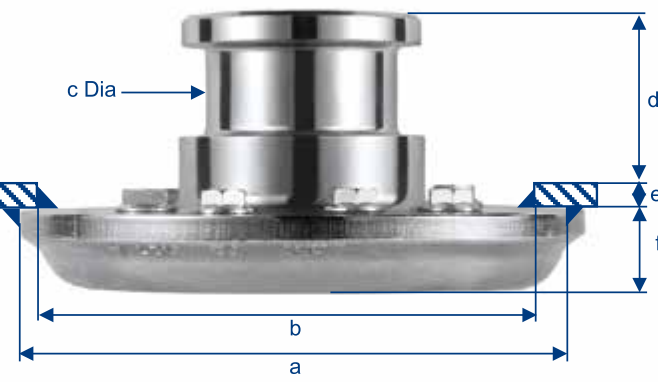


2.0" KZ Kingpin



Model	D Value (KN)	Weight (kg)	Torque (Nm)	a (mm)	b (mm)	c Dia (mm)	d (mm)	e (mm)	f (mm)
KZ 1008	162	15	190±10	260	235	2.0"	84	8	37
KZ 1010	162	15	190±10	260	235	2.0"	84	10	34
KZ 1012	162	15	190±10	260	235	2.0"	84	12	33
KZ 1516	170	28	500±30	300	270	2.0"	84	16	48
KZ 1410	162	18	190±10	260	235	3.5"	74	10	34
KZ 1412	162	18	190±10	260	235	3.5"	74	12	33
KZ 1016	320	30	500±30	300	270	3.5"	74	16	48

3.5" KZ Kingpin



JOST

- 

1 **Fifth wheel couplings and systems**  
2" and 3 1/2" fifth wheel couplings in a variety of construction heights, bearing types and versions, mounting plates, sliders and dual-height fifth wheel systems; sensorcontrolled systems for the coupling procedure between truck and trailer
- 

2 **King pins**  
2" and 3 1/2" king pins with a conical or plate-shaped flange
- 

3 **Landing gears**  
Landing gears with variable bolting heights, crank handles, connection shaft-lengths and foot types, special landing gears for special applications
- 


4 **Axle systems**  
Wide range of weight-saving trailer axles with additional special equipment
- 


5 **Hubodometers**  
Used to calculate distance driven, independent of the truck
- 


6 **Ball bearing turntables**  
Ball bearing turntables and slewing rings in a wide range of sizes and versions
- 

7 **Container technology**  
Components for intermodal transports, supports, twist locks and bolsters, swap body lifting devices, guide roller bearings and bearings

ROCKINGER


- 


8 **Road traffic**  
Open-end, hook and ball towing hitches, suspension elements, VARIOBLOCK alternating system and special models
- 

9 **Drawbars and towing eyes**  
Drawbars and towing eyes as well as custom-made products for on and off-road usage
- 

10 **Agriculture**  
Drawbars and towing eyes as well as custom-made products for on and off-road usage


TRIDEC

- 

11 **Steering system**  
Axel-independent or manufacturer-independent mechanically, hydraulic and electronically controlled steering systems for trailers
- 

12 **Axle suspensions**  
Air suspension or hydraulically suspended axle suspensions for on and off-road usage

Edbro

- 

13 **Vehicle-mounted hydraulic systems**  
Front end, underbody and tipping ejector cylinders for trucks and trailers/trailer tippers